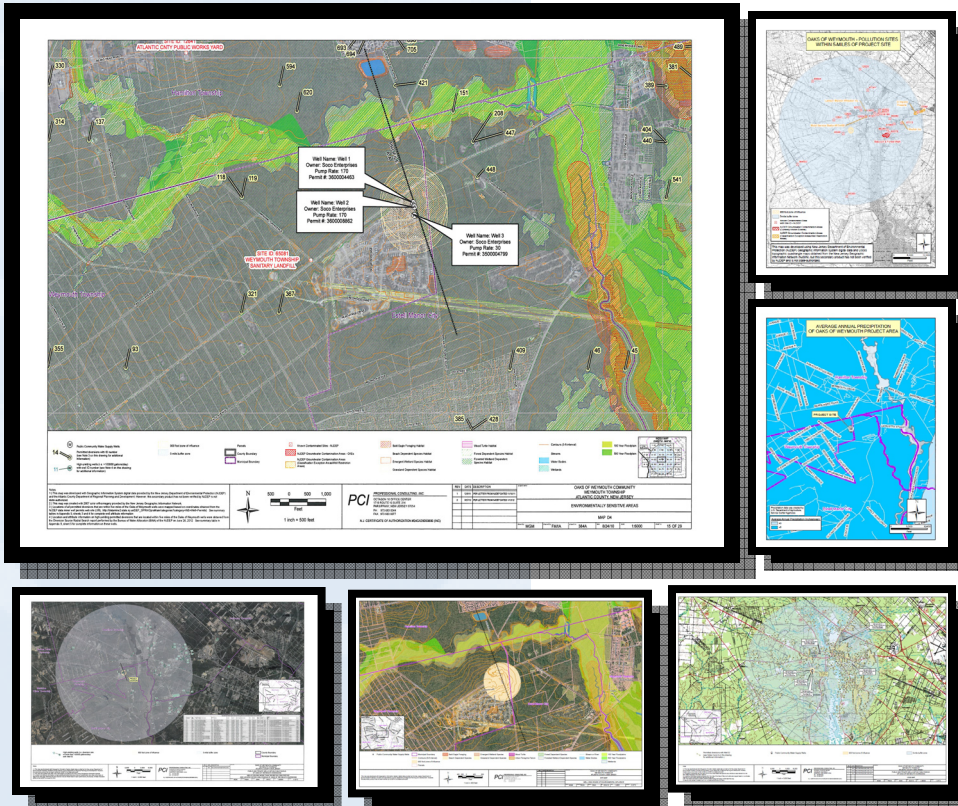


# The Oaks of Weymouth NJDEP Water Allocation Permitting and Spatial Analysis

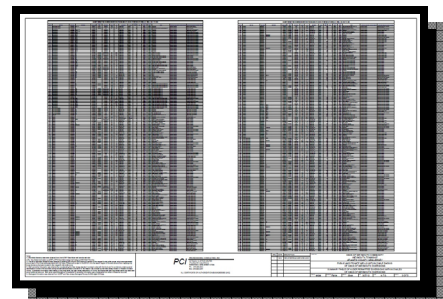
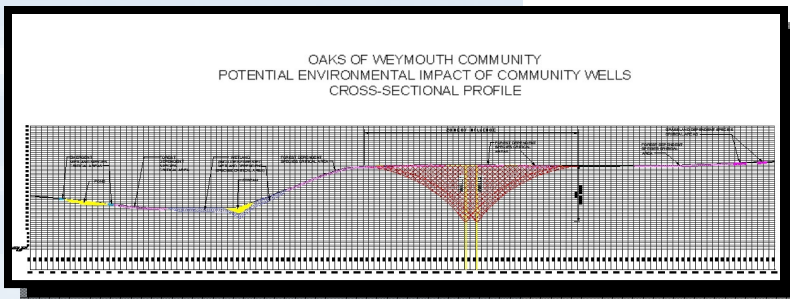


## Design Data

**Owner**  
The Oaks of Weymouth

■ **Location**  
Weymouth Township,  
Atlantic County, New  
Jersey

As part of a project involving a modification to an existing New Jersey Department of Environmental Protection (NJDEP) Water Allocation Permit, PCI performed spatial analysis tasks on public water supply well and environmental data obtained from the (NJDEP). Our office generated a variety of hard copy map products with NJDEP and Atlantic County GIS data, including maps showing the locations of all public and private wells, environmentally-sensitive areas, groundwater contaminated sites, and property lines located within five-miles of the project site. Mapped well locations from Microsoft Excel spreadsheet data into GIS format through creating event themes in ArcGIS data and added attribute data to GIS well layer through a variety of GIS data administration and analysis tasks such as spatial table joins and queries by attributes and location.



**PCI**  
**Professional Consulting, Inc.**

**Consulting Engineers**